

Southend Speed Weekend

Terms & Conditions of entry to all Competitors.....	3
Responsibility.....	3
Liability.....	3
Insurance.....	3
Briefing.....	3
Personal Safety.....	3
Safety of others.....	3
Emergency procedure.....	4
Rash Vests.....	4
Support Boats.....	4
Competitor Check List for Registration.....	4
Entry to the Event.....	4
Limited numbers.....	4
Confirmation of entry.....	4
Fees.....	5
The Organisers.....	5
Contact details during the Event.....	5
Courses.....	6
Course Types.....	6
Start/Finish.....	6
Plotting of course and GPS run data.....	6
Course Opening Times.....	7
Flags.....	7
GT-31s at the Event.....	8
A. If you are using your own unit then the following applies:.....	8
B. If you are hiring a unit then please read the following:.....	8
Classes.....	9
Sailboard Fleet.....	9
Kite Fleet.....	9
Boat Fleet.....	9
Prizes.....	10
1st place in each of the following categories.....	10
<i>Fastest of the Day</i>	10
1st and 2nd place in each of the following categories.....	10
<i>Overall Fastest for the weekend</i>	10
Event Sponsor.....	11

Sara’s Tea Gardens – Premium Sponsor	11
Southend Kitesurfing – Premium Sponsor	11
Event Sponsor	12
Southend-on-Sea Council – Race control premises sponsor	12
Event Sponsor	12
Chalkwell Lifeguards	12

Terms & Conditions of entry to all Competitors

Responsibility

The safety of a Boat, Sailboard or Kite board and her entire management, including insurance, shall be the sole responsibility of the Owner/Competitor racing or using the Boat, Sailboard or Kite board for any purpose.

The issue of sailing instructions, or any other directives, either verbal, written, or implied in no way limits or reduces the complete responsibility of the owner/Competitor for their crew and the management thereof.

Liability

The decision to compete is solely the individual competitors decision and as such the Event Organisers, Officials, Assistants or any Class Association will not be liable for any loss, damage, death or personal injury howsoever caused to the owner/Competitor or any of their crew as a result of their taking part in the trials, or races.

Insurance

Moreover every Owner/Competitor warrants the suitability of his/her Boat, Sailboard or Kite board for the trials, race or races. All Boats, Sailboards or Kiteboards shall be insured against Third Party Liability for a minimum of £2,000,000.

Briefing

All competitors MUST attend the briefing each morning to ensure that they have been briefed by the Course Manager and made aware of any safety instructions pertinent to that day before going on the course.

Personal Safety

If you intend to go on the water ensure that you have adequate protection from the weather. You are advised to wear approved Life jackets or Buoyancy aids at all times when on the water.

Safety of others

Always remember to look out for people in the water who may be in difficulty and if you see someone check that they are ok, do not assume anything. Safety is of paramount importance so if someone is seen to be in difficulty then everything stops until they are rescued.

Emergency procedure

At the race office, the beach area and on the safety boats there will be someone with a radio and or a telephone. If you are aware of any safety problem report it immediately. If you are unable to find an event official then dial 999 and ask for the Coastguard.

The location to give is Chalkwell beach, Southend, Essex.

Rash Vests

To distinguish competitors from other people on the water you will be asked to wear a Speed Weekend rash vest.

These will be available from the event beach office at the briefing; a £20 refundable deposit will be required. CASH ONLY please!

Support Boats

Competitor's support boats are allowed. However a launch fee will be due. Please notify us BEFORE the event to make arrangements

Competitor Check List for Registration

- Bring your GT31 (if you have one) to registration – we will check the settings and the ID of your unit
- If you are hiring a GT31 bring a refundable £100 deposit in cash only.
- Check that the details we hold for you are correct.

Entry to the Event

Limited numbers

For practical and safety reasons we aim to limit the total number of competitors on the water at any time to about 80, the event will very likely be oversubscribed so book early to avoid disappointment.

Confirmation of entry

Entry is only secured on payment of the appropriate fee following completion of the online registration process. The payment receipt that will have been emailed to you is your proof of entry.

Fees

You can enter for either 1 or 2 days

1 Day £25 (20 places available)

2 Days £40 (60 places available)

These fees cover the cost of us providing the necessary items such as Competitor's rash vests, Buoys & Anchors, Results software and equipment, Safety boats, Fuel and Crews.

The event is non-profit making and our event sponsors provide all prizes.

Competitors may compete with any wind powered sailing craft.

The Organisers

Event Organiser	Steve Davison
Event Advisor	Nick Povey
GPS Timing and Results Software	Tim Daish
Event Support	Norman Phillips

Contact details during the Event

During the event the following people will have access to 2 way radios and remain in contact with the timing boats, beach and safety boats.

Steve Davison	07734 936828
Nick Povey	07801 757505
Norman Philips	07763 224585

Courses

Course Types

The exact course will be set on a daily basis according to the conditions and will be announced during the competitors briefing each morning. Please be aware that the course may be changed at short notice and it is your responsibility to check the notice board and flags.

Start/Finish

At the Start of the course there will be a lead-in buoy 150m before the start line denoting the "one competitor at a time" area. Anchored buoys that will display the course open/close flags define the start line.

To enter the course it is necessary to sail between the buoys. When using a beach course, the inner buoy may be sat on the beach depending upon tides.

The End of the course is defined as an arc from the point where the competitor crosses the start line (this is done accurately by software when calculating the results).

An arc of buoys is positioned to indicate an approximate end line distance just in excess of 500m as a visual guide to competitors out on the course.

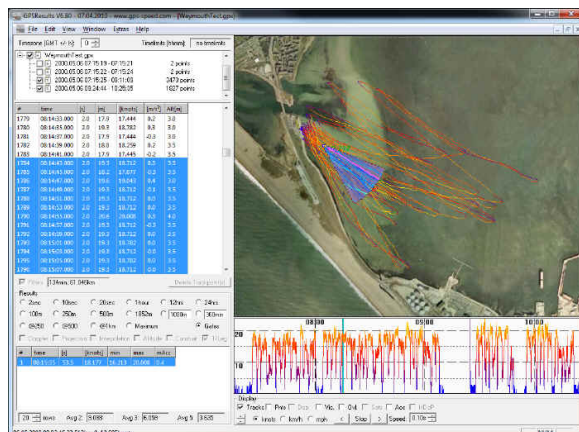
It's in your interest to sail fast beyond these buoys to ensure the best possible run speed is obtained. Competitors should continue beyond these course markers, so they can safely tack and return to the start line OUTSIDE of the main course track without impeding other competitors.

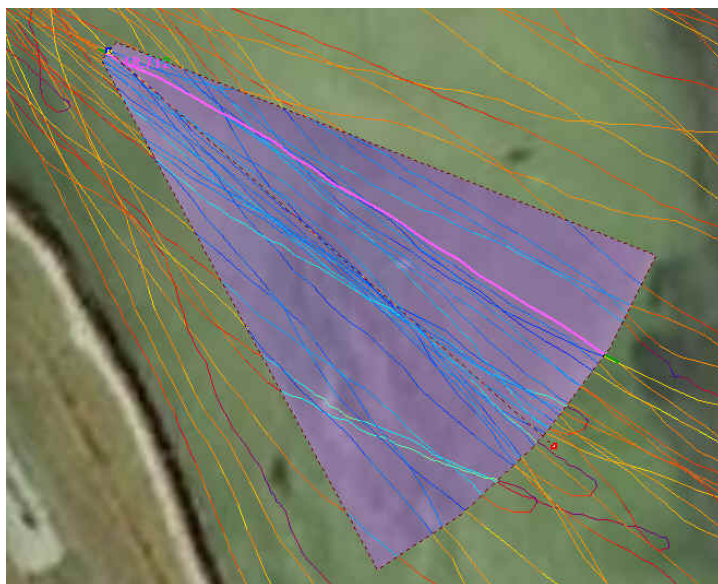
This type of course has two advantages:

- It can accommodate wind shifts of approximately 20 degrees
- Different types of craft can sail on their individual fastest wind angle

Plotting of course and GPS run data

The example image here is an example of the run data for a "Harbour Course" being processed in the GPS Results software; it shows the course as a blue area, and a multitude of runs through the course and around the harbour.





The image left shows in greater detail, the 'hot' areas of the course in which competitor's runs are deemed to be qualifying. The course begins at the narrow end with a ~20m wide gate and extends in a pie/segment shape for a distance of 500m. The red marker determines the centre line of the 20m rectangular track.

Each competitor's tracks are shown as the individual lines, heading both up and down the course. Software processing ensures that only those runs heading up the course the right way are selected.

Course Opening Times

The course is scheduled to open as follows

Saturday	Open at 13:00 and close at 18:00
Sunday	Open at 14:00 and close at 17:30

If exceptionally good conditions are being experienced the organisers will endeavour to take advantage of these by extending the normal session a further 30 or 60 minutes – In this event yellow flags will be prominently flown by the safety boats which will endeavour to signal to all on the water.

Similarly an earlier start may also be declared. Please check the event notice board before leaving the beach each night.

Flags

The meaning of the flags flying on the course buoys or safety boats are as follows:

- Red flag Course Closed
- Green flag Course Open
- Yellow flag Course Open for Extended Time

GT-31s at the Event

You may either

- A. Bring your own unit
- B. Hire one from the organisers (NB. a limited supply is available):

A. If you are using your own unit then the following applies:

1. Before the event check the firmware version and whether an update is necessary, then check the settings in accordance with those required for the event below.
2. Ensure the unit is fully charged and that you are sure it is able to write data to a good, formatted SD card with sufficient empty space.
3. Turn on the unit and leave outside for 10 minutes before going on the water.
4. Go sailing - DO NOT TURN THE UNIT OFF DURING THE DAY.
5. Bring the unit back to the "data collection point" (we believe this will be a tent set up at the beach) NO LATER THAN 30 MINUTES AFTER THE COURSE CLOSES.
6. The organisers will turn the unit off and COPY your data.
7. The unit and SD card will be returned to you and it is your responsibility to charge the unit and ensure sufficient memory capacity remains for the next day - i.e. back to step 2 and repeat each day.

B. If you are hiring a unit then please read the following:

1. Bring a deposit for £150 (preferably a cheque made out to "Southend Kitesurfing"), which is fully refundable. The cost to rent a unit and Aquapac will be £10 and will be payable upon entry.
2. Collect the unit each morning from the "data collection point" (we believe this will be a tent set up at the beach). Go sailing - DO NOT TURN THE UNIT OFF DURING THE DAY.
 - The GT-31 will have been prepared, turned on and placed in an Aquapac ready for use.
3. Bring the unit back to the "data collection point" (we believe this will be a tent set up at the beach) NO LATER THAN 30 MINUTES AFTER THE COURSE CLOSES.
4. The organisers will turn the unit off and read your data.
5. The organisers will charge the unit overnight and prepare it for use the following day.
6. Finally, please don't forget to return the unit and collect your deposit before leaving the event.

Classes

Sailboard Fleet

Craft definition: Has a sail, or sails, with a pivot at the base such that the rider supports the sail. (Windsurfer)

Status: Newbie windsurfer
First time in a speed event;

Status: Experienced windsurfer
Has competed in a speed event before;

Kite Fleet

Craft definition: A board propelled by kite(s) attached to the rider who then stands on the board. (Kitesurfer)

Status: Newbie kiter
First time in a speed event;

Status: Experienced kiter
Has competed in a speed event before;

Boat Fleet

Craft definition: Anything that sails which isn't a Kite board or Sailboard; it may have sails, kites or rotors to propel it and only uses non-stored wind energy as the power source.

Status: Newbie boat
First time in a speed event;

Status: Experienced boat
Has competed in a speed event before;

Prizes

1st place in each of the following categories.

Fastest of the Day

- Kite
- Sailboard
- Boat

1st and 2nd place in each of the following categories.

Overall Fastest for the weekend

- Kite (Newbie)
- Kite (Experienced)
- Sailboard (Newbie)
- Sailboard (Experienced)
- Boat (Newbie)
- Boat (Experienced)

Event Sponsor

Sara's Tea Gardens – Premium Sponsor

Situated in Old Leigh, Sara's Tea Garden is a beautifully presented eatery where you can enjoy a hearty breakfast, relaxing lunch and an afternoon cream tea.



During the summer months Sara has some very special evenings planned once again so keep an eye on the website and Facebook page for announcements as these evenings sell out fast.

The Tea Garden is becoming increasingly popular for functions such as birthdays and family gatherings so booking early is highly recommended.

Contact Sara's for reservations on 01702 477 315

Southend Kitesurfing – Premium Sponsor

[Southend Kitesurfing](#) is owned and run by Steve Davison who incidentally is also organising the speed weekend.

Southend kitesurfing is an award winning business and provides high quality tuition in Powerkiting and Kitesurfing.



We are increasingly working with different groups such as disadvantaged youngsters and those with disabilities. This has proven very rewarding both for us and for our clients, as kite flying is a highly stimulating exercise and targets many aspects of functionality.

Event Sponsor

Southend-on-Sea Council – Race control premises sponsor



Southend Council have supported the event via use of their foreshore office and are actively promoting events on the water throughout the year.

The Speed weekend is the first event on the water this season and is set to be an exciting weekend with more and more people showing interest.

Event Sponsor

Chalkwell Lifeguards

We are a volunteer Beach, Safety, Patrol and Rescue unit providing rescue, safety and medical cover along the beaches to beach users both in and out of the water along the Southend on Sea area. We are a HM Coastguard Declared Facility and work closely with them to provide the safety cover.

[Chalkwell Lifeguards](#) volunteers are trained to deal with medical emergencies along with rescue skills to save lives in on and near to water. We regularly average at least 2500 hours each year providing this service free of charge. We rely totally on donations from the public and from business'.